

The background of the entire image is a dense, abstract composition of thick, expressive brushstrokes. The colors are primarily bright yellow, vibrant orange, and a deep, dark blue. The strokes are layered and overlapping, creating a sense of movement and texture. Some strokes are horizontal, while others are diagonal or vertical, and they vary in thickness and intensity, giving the background a dynamic and energetic feel.

Turner

A way to draw
Sketchbook

We believe everyone can draw.

Drawing isn't just a skill – it's a powerful way to look closely, think critically and express yourself. In this booklet, we invite you to:



Slow down and really look closely



Experiment with new ways of looking

We are going to go through some warm up exercises and then cover **5** key elements of drawing



Explore your surroundings and learn the key elements of drawing



Learn to draw with confidence and openness

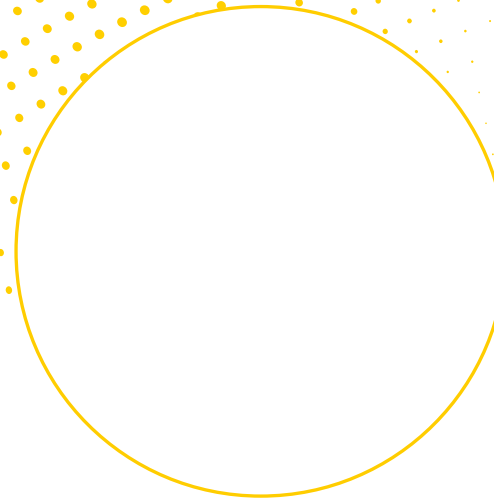


Learn the rules to break them!

**Line Form
Texture Tone
Composition**

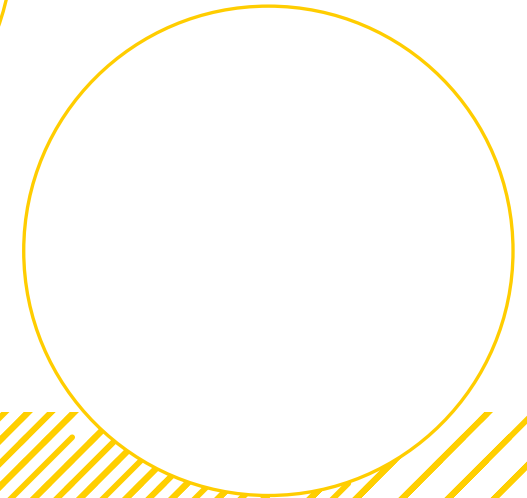
Let's warm up.

Follow the simple activities below to get your mind thinking creatively



Draw as slowly as you can for 10 seconds.

Scribble as fast as you can for 3 seconds!



Close your eyes and let your pencil guide you for 20 seconds.



“ Before I started to draw,
I started to look ”
Bridget Riley



When looking,
you might observe
the following
elements that
we will return to:

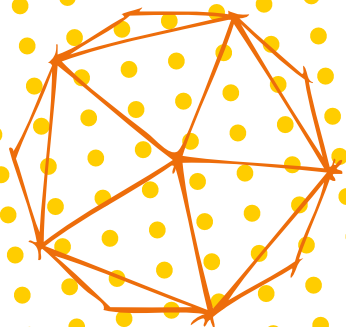
LINE – a mark that shows the
path of a pencil, pen, or brush.

FORM – the shape of
something and whether it
has depth, volume or
looks 3-dimensional

TONE OR VALUE – how
light or dark something looks

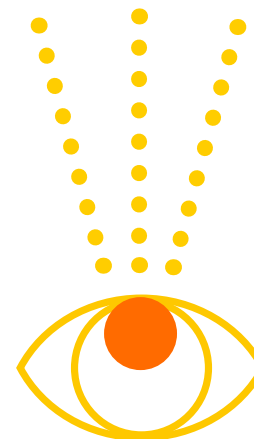
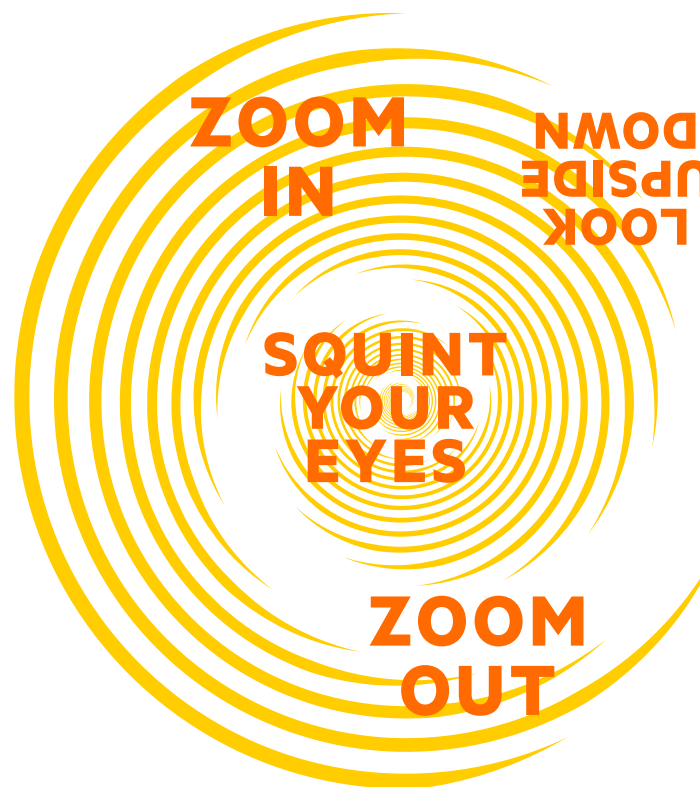
TEXTURE – how something
feels or looks like it would feel,
such as rough, smooth, or soft

COMPOSITION – how
all the parts of a drawing
are arranged



SEE

For some inspiration, try these
different ways of looking:



ACTION



Make a hole here

Look through the
hole and use it as
a viewfinder.
What can you see?
Draw it here



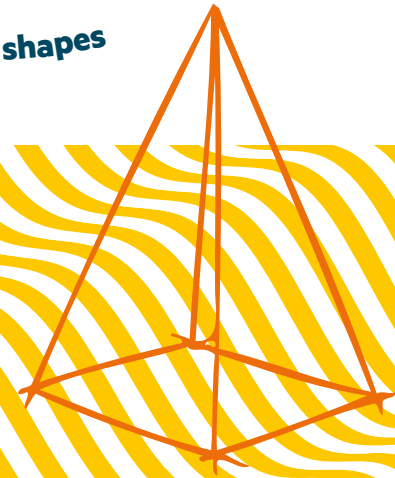
SEE

**Find an artwork or view that you like.
Stare at it for 1 minute. Now look away.
From memory, now draw the outline
of what you saw.**

**Look again.
Did you get it right?
What did you miss
or add? Which version
do you prefer?**

**Drawing is
about learning
to really look and see
what's there — the more
you practice, the more
details you'll notice
and the better your
drawings will be.**

**Add to your drawing with any of the following:
Repeated patterns zig zag or wiggly line shapes**



line

START
HERE

Take your line for a walk

1

Find a comfy spot where you can sit and observe your surroundings.

2

Look closely around you. What shapes, curves, straight lines, patterns and shapes can you find?

3

Now, place your pencil on the page – and don't lift it! Let your eyes guide your hand as you draw what you see, using one continuous line.

END
HERE

LINE

Hungry

Fill in each
rectangle
using lines,
responding
to each word.

Calm

Happy

Scared

Messy

Sleepy

Look out to sea and
uncover what patterns,
rhythms, waves and
lines you see.

Create your own sea here.

TONE

Tone is how light or dark something is. It can also be used to create “depth”, making a 2D drawing look 3D. It’s magic on a page! Sometimes people use the word “value” to describe tone.

HIGHLIGHT



Look at this gradient – the lighter shading is called “highlight”, and the darker shading is called “lowlight”



Examples of shading, crosshatching, dots

← LOWLIGHT

Use the boxes to experiment with tone.



TONE

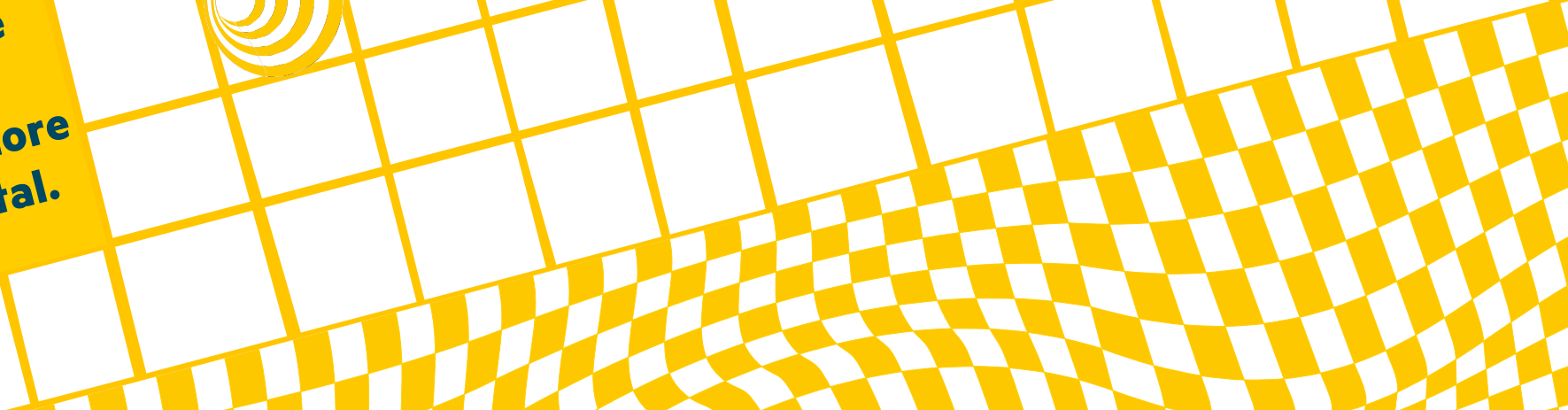
Start with the image at the top and change your tone for each image.

Does one appear to look happier?
Which one is your favourite? Why?



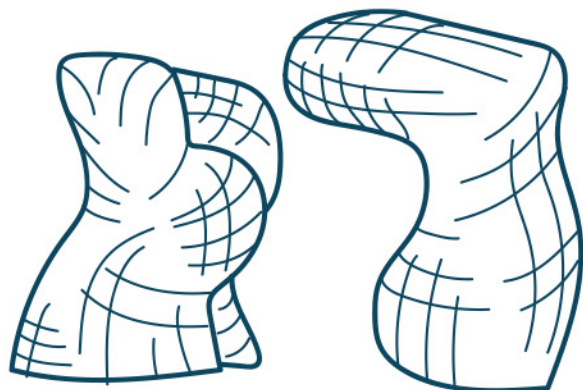
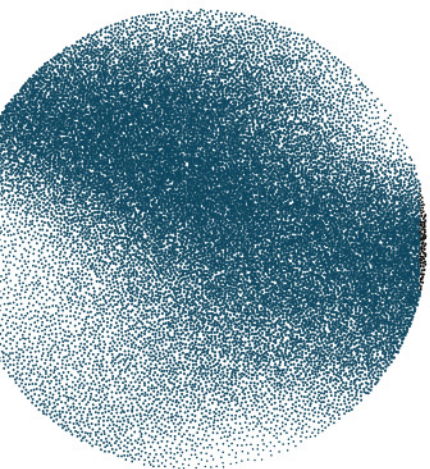
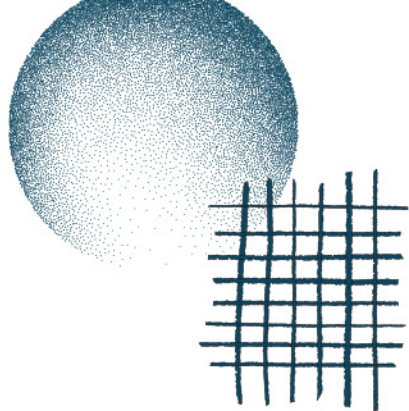
**Create
a repetitive
pattern
by shading in
the squares
on the grid.**

**You could
fill in every
other square
or create
something more
experimental.**



FORM

Now let's try to combine the grid and tone. Observe the objects. Where are the shadows and where does the light hit? Use shading and tone to make a copy.



TEXTURE

Now let's explore texture. For each word below, draw what you think it would feel or look like:

Prickly

Fluffy

Bumpy

Wet

Soft

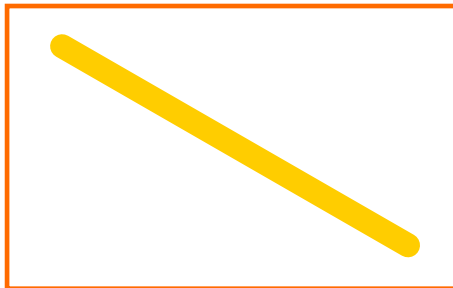
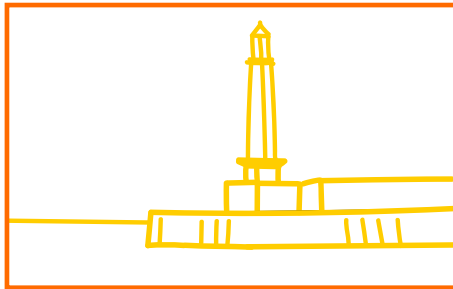
COMPOSITION

Go outside.

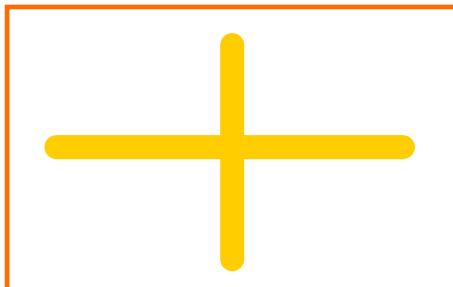
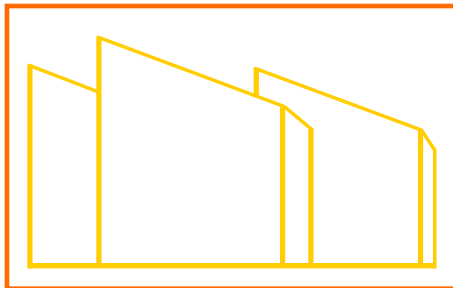
Drawing is a great way to explore different environments. Can you find the following shapes outside?



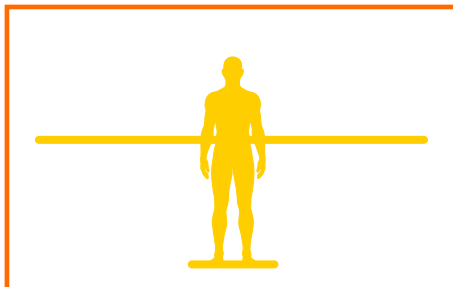
L-Shape



Diagonal



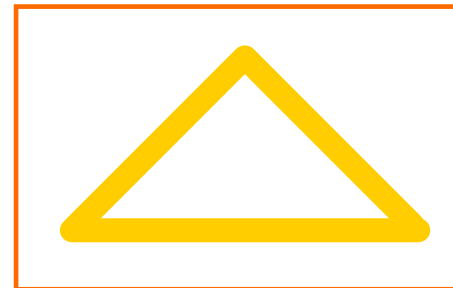
Cross



Tip – choose one of the shapes.
Copy it onto tracing paper and
hold up to your environment.



Radiating



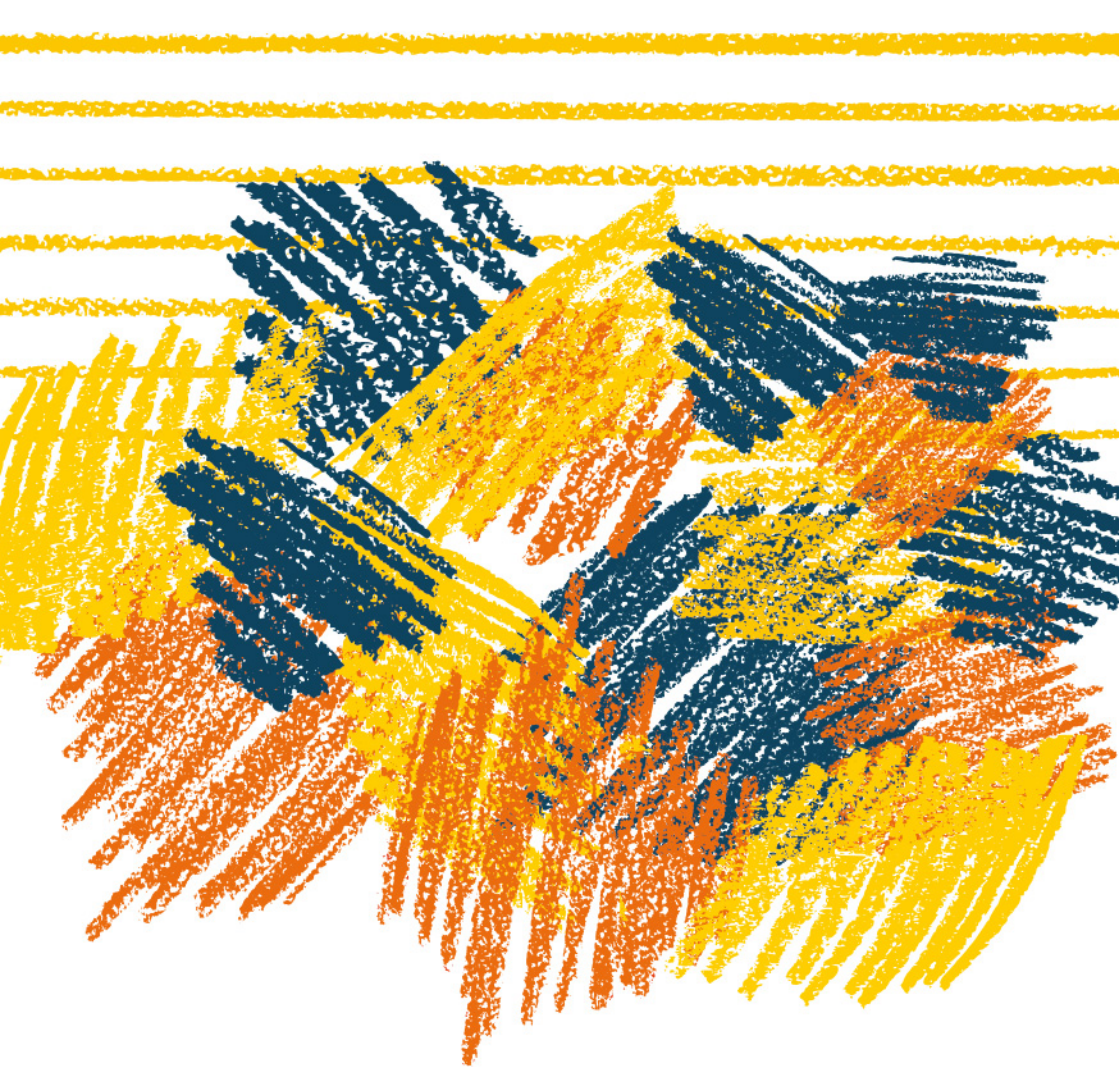
Pyramid



Golden Spiral







Generously supported by the De Ying Foundation